



EPSON SureColor S40600/S60600/S80600 contone driver

This document describes the supported features and options of the EPSON SureColor S40600, S60600, S80600 CMYK printer driver for Fiery XF.

Starting with Fiery XF 7.2.3, the integration with Epson Edge Dashboard has changed.

Supported printers

- EPSON SureColor SC-S40600 Series
 - EPSON SureColor SC-S40600 (Europe, America, Former republics of the Soviet Union)
 - EPSON SureColor SC-S40650 (Japan)
 - EPSON SureColor SC-S40670 (Australia, New Zealand, Korea, Singapore, Taiwan),
 - EPSON SureColor SC-S40680 (China, Hong Kong)
- EPSON SureColor SC-S60600 Series
 - EPSON SureColor SC-S60600 (Europe, America, Former republics of the Soviet Union)
 - EPSON SureColor SC-S60650 (Japan)
 - EPSON SureColor SC-S60670 (Australia, New Zealand, Korea, Singapore, Taiwan),
 - EPSON SureColor SC-S60680 (China, Hong Kong)
- EPSON SureColor SC-S80600 Series
 - EPSON SureColor SC-S80600 (Europe, America, Former republics of the Soviet Union)
 - EPSON SureColor SC-S80650 (Japan)
 - EPSON SureColor SC-S80670 (Australia, New Zealand, Korea, Singapore, Taiwan),
 - EPSON SureColor SC-S80680 (China, Hong Kong)

Supported OS

- Windows 64
- *Mac OS X not supported since Fiery XF 7.0*

License

You require a license for the Printer Option Group 6

Technical specifications

Item	SureColor SC-S40600	SureColor SC-S60600	SureColor SC-S80600
Print head	Precision core TFP 1 print head (360 Nozzles / ink)	Precision core TFP 2 print heads (360 Nozzles x 2 / ink)	Precision core TFP 2 print heads (360 Nozzles x 2 / ink)
Printer width	64 inches	64 inches	64 inches
Ink set	EPSON UltraChrome GS3 C/M/Y/K eco solvent ink Improvement of color gamut, drying properties, glossiness	EPSON UltraChrome GS3 C/M/Y/K x 2 sets eco solvent ink Improvement of color gamut, drying properties, glossiness	EPSON UltraChrome GS3X C/M/Y/K/O/R/Lc/Lm/Lk/MS or W eco solvent ink Improvement of color gamut, drying properties, glossiness
Print resolution and target speed (m ² /h)	360 x 720dpi 1pass 56m ² 720 x 720dpi 4pass 16m ² 720 x 1440dpi 6pass 10m ² 1440 x 1440dpi 12pass 3.5m ²	360 x 720dpi 1pass 94m ² 720 x 720dpi 4pass 28m ² 720 x 1440dpi 6pass 17m ² 1440 x 1440dpi 16pass 6.6m ²	360x720dpi 2pass 51m ² 720x720dpi 6pass 18m ² 720x1440dpi 12pass 8.8m ² 1440x1440dpi 24pass 4.8m ²
Custom paper #	Custom paper: #1-30 Rip setting(#0): Not supported	Custom paper: #1-30 Rip setting(#0): Not supported	Custom paper: #1-30 Rip setting(#0): Not supported
Custom paper setting	Epson Edge Dashboard software manages custom paper settings.	Epson Edge Dashboard software manages custom paper settings.	Epson Edge Dashboard software manages custom paper settings.
Auto adjustment	PF, bi-d adjustment	PF, bi-d adjustment	PF, bi-d adjustment
Additional dryer	Optional equipment	Standard equipment	Optional equipment

Connection

100Base-TX, 1000Base-T. Print via TCP port 9100

Color mode

- CMYK

Ink configuration

- EPSON UltraChrome GS3 ink (SureColor SC-S40600 and SureColor SC-S60600)
- EPSON UltraChrome GS3X ink (SureColor SC-S80600)

Media source

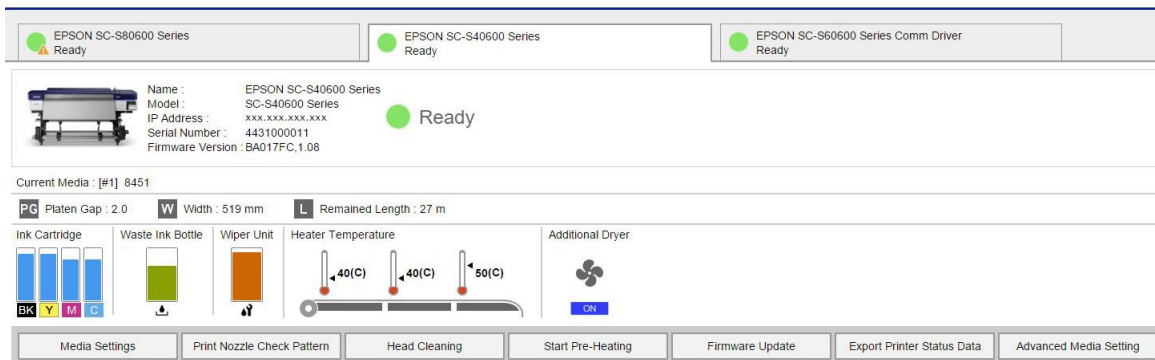
- Roll

Preparation

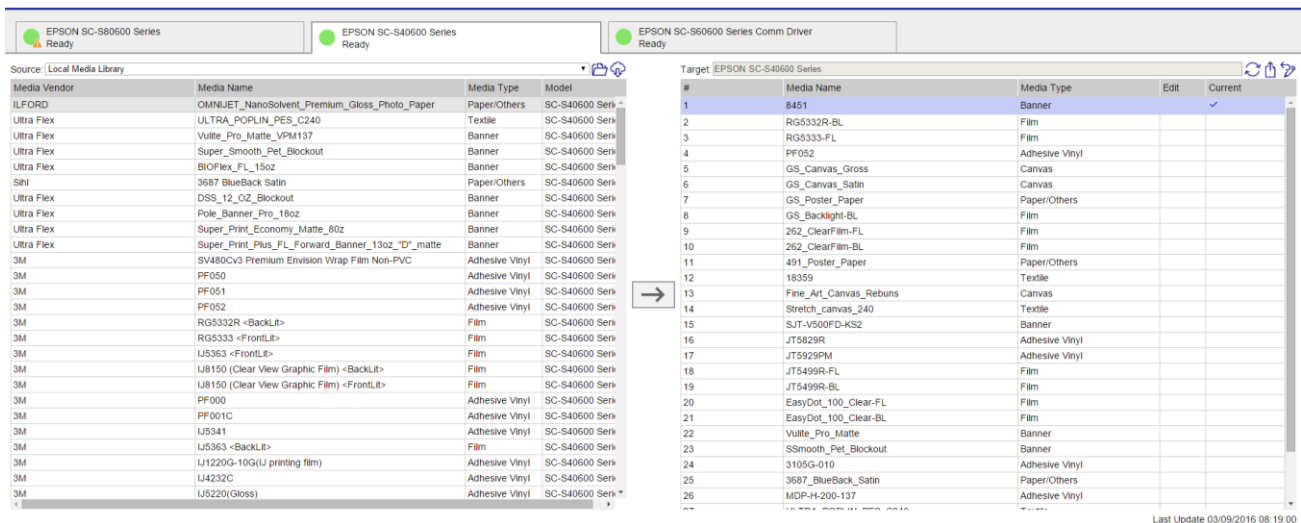
Before you can use the Epson SureColor printer in the EFI RIP software, you must first install and set up Epson Edge Dashboard. Go to www.epson.sn to download and install the latest printer driver and Epson Edge Dashboard.

After installing the software, register your printer using the Epson Edge Dashboard. It is possible to register up to four printers. For more information on printer registration, see the Epson documentation.

If everything is set up correctly it should look like this:



The next step is to download the media settings. You can do this by clicking Media Settings in Epson Edge Dashboard.

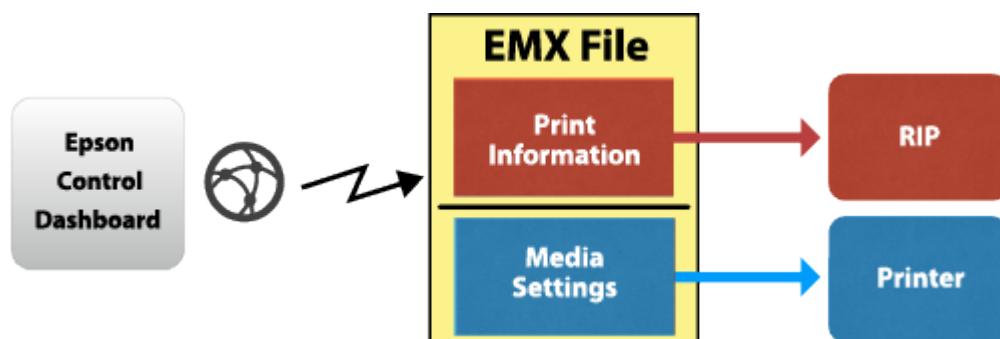


Once you have the media settings in the Source (Local Media Library), the next step is to send the data from the Source (Local Media Library) to the Target (the printer)

You can perform the following operations from this screen:

- Download print setting files (EMX files) provided by Epson
- Register media settings in the EMX file to the printer
- Edit parameters

For more detailed information, see the documentation provided by Epson.



After the media are registered in the printer, the system is ready to use with the EFI RIP software.

Integration into Fiery XF

Initially, no media list is available in Fiery XF, even though a local media library is displayed on the Epson Edge Dashboard.

Media list from printer

To transfer the media list to Fiery XF, set up the output device in Fiery XF for the appropriate printer model, including the IP address. As soon as you save your settings, all the available media information and ICC profiles from the Target (printer) list are downloaded using Epson Edge Dashboard.

Next, Fiery XF creates EPL files for each media registered in the printer. This process can take some time, and depends very much on your PC. Wait at least one minute before checking the media list. If the list does not appear, restart the Fiery XF server.

Media List from EMX file

Alternatively, you can drop an EMX file into this folder:

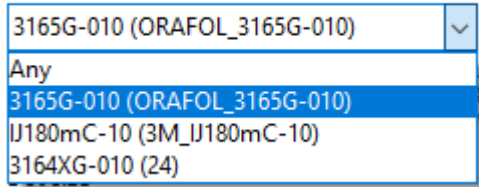
`C:\ProgramData\EFI\EFI XF\Server\Temp\EpsonEmxHotfolder`

Like for the printer, media information and ICC files will be downloaded from the Dashboard and EPL files will be created.

This is useful if another Dashboard is already connected to the printer but that Dashboard is not accessible. It works even without a Comm driver. The function is introduced in Fierx XF 7.2.3

The screenshot below shows an example how registered media types for a SureColor S40600 are displayed in Fiery XF:

Media name

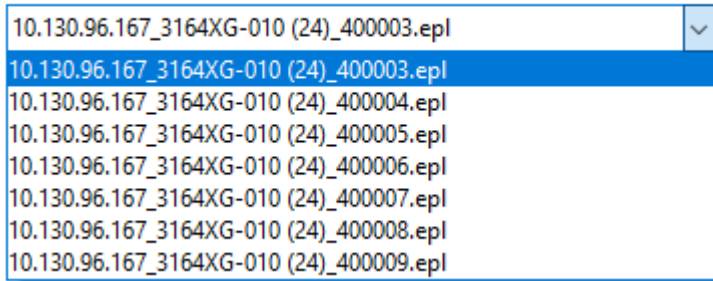


The last entry is from Custom Paper Setting 24 of the printer. This number appears in the main screen on the printer’s control panel. The name is the same as shown on the printer’s control panel media menu. The other entries are from EMX files. In that case the file name minus the initial “S40 “ is shown in parentheses.

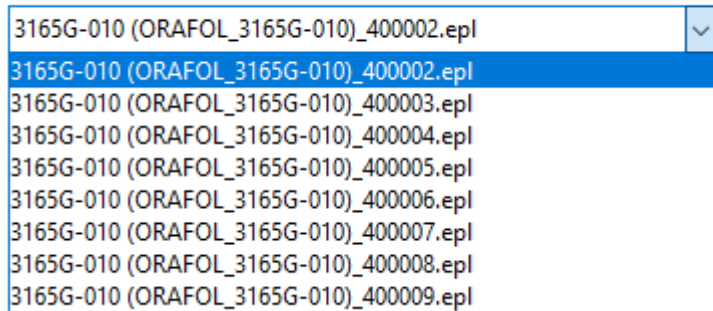
You can now select one of the downloaded, registered media. Depending on the selected media, multiple EPLs may be available. You can see if it is from the printer...

... or from an EMX file:

Resulting Calibration(s)

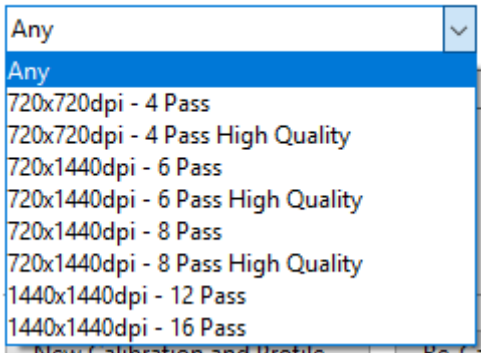


Resulting Calibration(s)

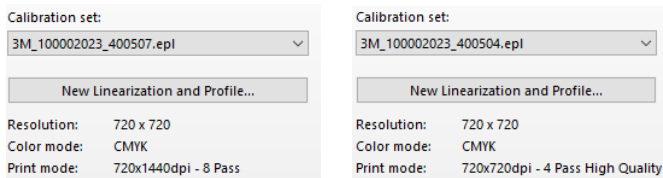


The Print mode list box shows the print modes by name:

Print mode



Every EPL represents a different combination of printer resolution and print quality, such as illustrated in the screenshots below:



Note: There is no need to repeat the procedure for additional media downloaded through Epson Edge Dashboard. You just need to make sure that the downloaded media is registered properly at the Epson printer itself using Epson Edge Dashboard.

Printing

The User's guide asks you to choose the media setting number once you have loaded the media. In our example above it would be setting 24. This setting will be used. The Fiery XF driver will NOT change the media setting number of the printer (as opposed to versions of Fiery XF prior to 7.2.3).

Then choose a matching media type in Fiery XF:

- If you have registered the EMX on the printer, choose the media type which has the number in parentheses, e.g. "3164XG-010 (24)"
- If you have just the EMX file, choose the media type which should be most close to what is on the printer, e.g. "3165G-010 (ORAFOL_3165G-010)"

Wait for print completion

This checkmark controls the behavior after print data transfer: If enabled, the driver will wait until printer status becomes printed or error.

FAQ

Question	Answer
Can I use Fiery XF without Epson Edge Dashboard	Not entirely without. Epson Edge Dashboard must be either installed on the same computer or accessible in the same network (exactly one installation)
Can I use EMX files	Yes of course
Can I take a generated EPL and create my own ICC profile?	Yes, if you have media types populated from Dashboard.
Can I create an EPL in Color Tools and create my own ICC profile?	Yes, if you have media types populated from Dashboard and you have chosen a EPL for the same media type in System Manager. Ink density from that EPL will go into your new EPL.
If the media setting on the printer was created only at the printer (using Easy Media Setup), not by Dashboard: Can I create an EPL in Color Tools and create my own ICC profile,?	No. You can create the EPL based on EMX for similar media and print.
Can I take my calibration sets to another Fiery XF?	Not directly. Export the EMX file and media settings and register those on the other printer. Then you will get calibration sets with same content and have your settings on the printer. Once that is established, you can also use calibration sets you created yourself.

Media types

The following sections list all the available media types per printer model.

Note: The EPLs created from the files downloaded through Epson Edge Dashboard do not always support all the combinations listed below.

EPSON SureColor S40600

Media type	Resolution and print quality	
Adhesive Vinyl	720x720dpi (2 Pass) 720x720dpi (3 Pass) 720x720dpi (4 Pass) 720x720dpi (4 Pass HQ) 720x1440dpi (6 Pass)	720x1440dpi (6 Pass HQ) 720x1440dpi (8 Pass) 720x1440dpi (8 Pass HQ) 1440x1440dpi (12 Pass) 1440x1440dpi (16 Pass)
Banner	360x720dpi (1 Pass) 720x720dpi (2 Pass) 720x720dpi (3 Pass) 720x720dpi (4 Pass)	720x1440dpi (6 Pass) 720x1440dpi (6 Pass HQ) 720x1440dpi (8 Pass) 720x1440dpi (8 Pass HQ)

Media type	Resolution and print quality	
	720x720dpi (4 Pass HQ)	
Backlit Film	1440x1440dpi (12 Pass) 1440x1440dpi (16 Pass) 1440x1440dpi (24 Pass)	
Frontlit Film	1440x1440dpi (12 Pass) 1440x1440dpi (16 Pass) 1440x1440dpi (24 Pass)	
Canvas	720x720dpi (2 Pass) 720x720dpi (3 Pass) 720x720dpi (4 Pass) 720x720dpi (4 Pass HQ) 720x1440dpi (6 Pass)	720x1440dpi (6 Pass HQ) 720x1440dpi (8 Pass) 720x1440dpi (8 Pass HQ) 1440x1440dpi (12 Pass) 1440x1440dpi (16 Pass)
Textile	720x720dpi (2 Pass) 720x720dpi (3 Pass) 720x720dpi (4 Pass) 720x720dpi (4 Pass HQ) 720x1440dpi (6 Pass)	720x1440dpi (6 Pass HQ) 720x1440dpi (8 Pass) 720x1440dpi (8 Pass HQ) 1440x1440dpi (12 Pass) 1440x1440dpi (16 Pass)
Paper	720x720dpi (2 Pass) 720x720dpi (3 Pass) 720x720dpi (4 Pass) 720x720dpi (4 Pass HQ) 720x1440dpi (6 Pass)	720x1440dpi (6 Pass HQ) 720x1440dpi (8 Pass) 720x1440dpi (8 Pass HQ) 1440x1440dpi (12 Pass) 1440x1440dpi (16 Pass)

EPSON SureColor S60600

Media type	Resolution and print quality	
Adhesive Vinyl	720x720dpi (2 Pass) 720x720dpi (4Pass) 720x720dpi (4 Pass HQ) 720x1440dpi (6 Pass) 720x1440dpi (6 Pass HQ)	720x1440dpi (8 Pass) 720x1440dpi (8 Pass HQ) 1440x1440dpi (12 Pass) 1440x1440dpi (16 Pass)
Banner	360x720dpi (1 Pass) 720x720dpi (2 Pass) 720x720dpi (4 Pass) 720x720dpi (4 Pass HQ)	720x1440dpi (6 Pass) 720x1440dpi (6 Pass HQ) 720x1440dpi (8 Pass)
Backlit Film	1440x1440dpi (12 Pass) 1440x1440dpi (16 Pass) 1440x1440dpi (24 Pass)	

Media type	Resolution and print quality	
Frontlit Film	1440x1440dpi (12 Pass) 1440x1440dpi (16 Pass) 1440x1440dpi (24 Pass)	
Canvas	720x720dpi (2 Pass) 720x720dpi (4 Pass) 720x720dpi (4 Pass HQ) 720x1440dpi (6 Pass) 720x1440dpi (6 Pass HQ)	720x1440dpi (8 Pass) 720x1440dpi (8 Pass HQ) 1440x1440dpi (12 Pass) 1440x1440dpi (16 Pass)
Textile	720x720dpi (2 Pass) 720x720dpi (4 Pass) 720x720dpi (4 Pass HQ) 720x1440dpi (6 Pass) 720x1440dpi (6 Pass HQ)	720x1440dpi (8 Pass) 720x1440dpi (8 Pass HQ) 1440x1440dpi (12 Pass) 1440x1440dpi (16 Pass)
Paper	720x720dpi (2 Pass) 720x720dpi (4 Pass) 720x720dpi (4 Pass HQ) 720x1440dpi (6 Pass) 720x1440dpi (6 Pass HQ)	720x1440dpi (8 Pass) 720x1440dpi (8 Pass HQ) 1440x1440dpi (2 Pass) 1440x1440dpi (16 Pass)

EPSON SureColor S80600

Media type	Resolution and print quality	
Adhesive Vinyl	720x720dpi (4 Pass) 720x720dpi (6 Pass) 720x720dpi (8 Pass)	720x720dpi (8 Pass HQ) 720x1440dpi (12 Pass) 720x1440dpi (16 Pass)
Banner	360x360dpi (1 Pass) 360x720dpi (2 Pass) 720x720dpi (4 Pass)	720x720dpi (6 Pass) 720x720dpi (8 Pass) 720x720dpi (8 Pass HQ)
Backlit Film	720x720dpi (8 Pass) 720x1440dpi (12 Pass) 720x1440dpi (16 Pass)	720x1440dpi (30 Pass) 1440x1440dpi (48 Pass)
Frontlit Film	720x720dpi (8 Pass) 720x1440dpi (12 Pass) 720x1440dpi (16 Pass)	720x1440dpi (30 Pass) 1440x1440dpi (48 Pass)
Canvas	720x720dpi (4 Pass) 720x720dpi (6 Pass) 720x720dpi (8 Pass)	720x720dpi (8 Pass HQ) 720x1440dpi (12 Pass) 720x1440dpi (16 Pass)
Textile	720x720dpi (4 Pass)	720x720dpi (8 Pass HQ)

Media type	Resolution and print quality	
	720x720dpi (6 Pass) 720x720dpi (8 Pass)	720x1440dpi (12 Pass) 720x1440dpi (16 Pass)
Paper	720x720dpi (4 Pass) 720x720dpi (6 Pass) 720x720dpi (8 Pass)	720x720dpi (8 Pass HQ) 720x1440dpi (12 Pass) 720x1440dpi (16 Pass)

EPSON SureColor S80600 White Ink

Media type	Resolution and print quality	
Adhesive Vinyl	720x720dpi (4 Pass) 720x720dpi (6 Pass) 720x720dpi (8 Pass) 720x720dpi (8 Pass HQ)	720x1440dpi (12 Pass) 720x1440dpi (16 Pass) 720x720dpi (18 Pass) White 720x1440dpi (32 Pass) White
Banner	360x360dpi (1 Pass) 360x720dpi (2 Pass) 720x720dpi (4 Pass)	720x720dpi (6 Pass) 720x720dpi (8 Pass) 720x720dpi (8 Pass HQ)
Backlit Film	720x720dpi (8 Pass) 720x1440dpi (12 Pass) 720x1440dpi (16 Pass) 720x1440dpi (30 Pass)	1440x1440dpi (48 Pass) 720x720dpi (18 Pass) White 720x1440dpi (32 Pass) White 1440x1440dpi (48 Pass) White
Frontlit Film	720x720dpi (8 Pass) 720x1440dpi (12 Pass) 720x1440dpi (16 Pass) 720x1440dpi (30 Pass)	1440x1440dpi (48 Pass) 720x720dpi (18 Pass) White 720x1440dpi (32 Pass) White 1440x1440dpi (48 Pass) White
Canvas	720x720dpi (4 Pass) 720x720dpi (6 Pass) 720x720dpi (8 Pass) 720x720dpi (8 Pass HQ)	720x1440dpi (12 Pass) 720x1440dpi (16 Pass) 720x720dpi (18 Pass) White 720x1440dpi (32 Pass) White
Textile	720x720dpi (4 Pass) 720x720dpi (6 Pass) 720x720dpi (8 Pass) 720x720dpi (8 Pass HQ)	720x1440dpi (12 Pass) 720x1440dpi (16 Pass) 720x720dpi (18 Pass) White 720x1440dpi (32 Pass) White
Paper	720x720dpi (4 Pass) 720x720dpi (6 Pass) 720x720dpi (8 Pass) 720x720dpi (8 Pass HQ)	720x1440dpi (12 Pass) 720x1440dpi (16 Pass) 720x720dpi (18 Pass) White 720x1440dpi (32 Pass) White

EPSON SureColor S80600 Metallic Ink

Media type	Resolution and print quality	
Adhesive Vinyl	720x720dpi (4 Pass) 720x720dpi (6 Pass) 720x720dpi (8 Pass) 720x720dpi (8 Pass HQ)	720x1440dpi (12 Pass) 720x1440dpi (16 Pass) 720x1440dpi (40 Pass) Metallic 1440x1440dpi (72 Pass) Metallic
Banner	360x360dpi (1 Pass) 360x720dpi (2 Pass) 720x720dpi (4 Pass)	720x720dpi (6 Pass) 720x720dpi (8 Pass) 720x720dpi (8 Pass HQ)
Backlit Film	720x720dpi (8 Pass) 720x1440dpi (12 Pass) 720x1440dpi (16 Pass) 720x1440dpi (30 Pass)	1440x1440dpi (48 Pass) 720x1440dpi (40 Pass) Metallic 1440x1440dpi (72 Pass) Metallic
Frontlit Film	720x720dpi (8 Pass) 720x1440dpi (12 Pass) 720x1440dpi (16 Pass) 720x1440dpi (30 Pass)	1440x1440dpi (48 Pass) 720x1440dpi (40 Pass) Metallic 1440x1440dpi (72 Pass) Metallic
Canvas	720x720dpi (4 Pass) 720x720dpi (6 Pass) 720x720dpi (8 Pass) 720x720dpi (8 Pass HQ)	720x1440dpi (12 Pass) 720x1440dpi (16 Pass) 720x1440dpi (40 Pass) Metallic 1440x1440dpi (72 Pass) Metallic
Textile	720x720dpi (4 Pass) 720x720dpi (6 Pass) 720x720dpi (8 Pass) 720x720dpi (8 Pass HQ)	720x1440dpi (12 Pass) 720x1440dpi (16 Pass) 720x1440dpi (40 Pass) Metallic 1440x1440dpi (72 Pass) Metallic
Paper	720x720dpi (4 Pass) 720x720dpi (6 Pass) 720x720dpi (8 Pass) 720x720dpi (8 Pass HQ)	720x1440dpi (12 Pass) 720x1440dpi (16 Pass) 720x1440dpi (40 Pass) Metallic 1440x1440dpi (72 Pass) Metallic