



VUTEk 32h

This document describes the specifics of the VUTEk 32h printer driver.

Installation

Install Fiery XF 7.1 with update 7.1.2 or later. The Fiery XF drivers are available only for the Windows server.

Printer settings

The settings are color-dependent. You can define them in Color Tools when you create a new base linearization (EPL) file. EPL files contain all the settings necessary to reproduce colors and ink coverage on the printer. They also contain a reference to an ICC color profile.

Color modes

- Advanced CMYK
- Advanced CMYKcmyk
- CMYK
- CMYKcmyk

Color Tools displays only those color modes that are used for EPL creation and those whose colors are compatible, even if the color mode is no longer supported.

Resolutions

- Fast scan:600 DPI Slow scan :360 DPI
- Fast scan:1000 DPI Slow scan :720 DPI

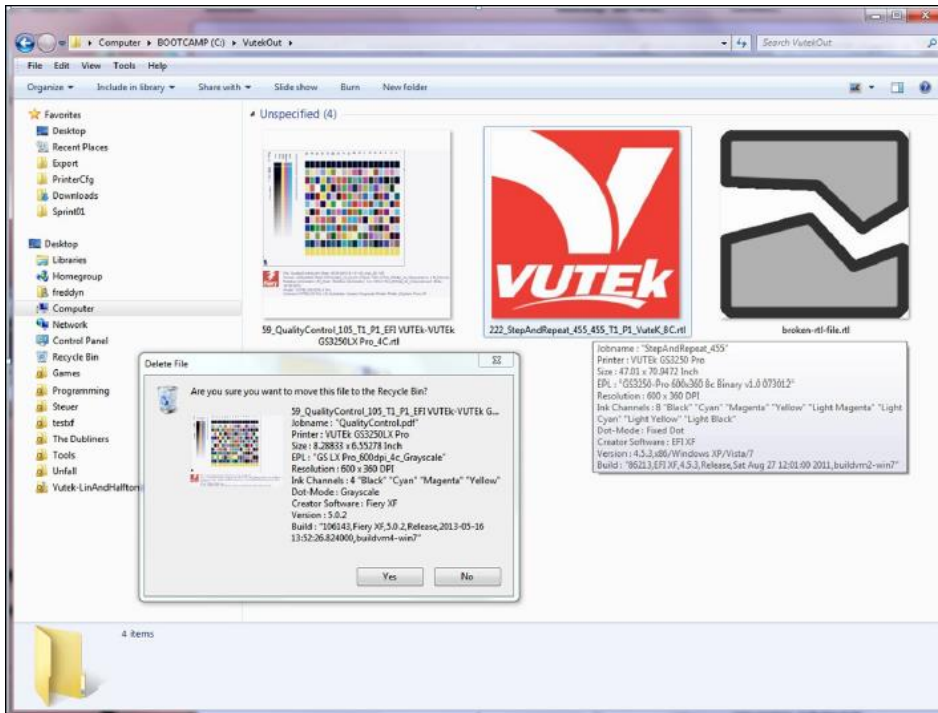
Halftoning

- Error diffusion (SE1)
- Stochastic screening (SE2)

Printer driver features

Print Head Control bar

This Fiery XF printer driver supports the Print Head Control Bar. For more information on how to use it, see “Printing to a VUTEk printer” in the Fiery XF user manual. You can download the user manual from <http://help.efi.com/index/index.html>.



While Fiery XF is processing an RTL file, it may show up as an invalid RTL until the RIP process has finished. To enforce a refresh and re-validation from the Explorer shell extension, press F5.

Print via IP address

Printing to a VUTEk via IP address speeds up the process and enables integration to other products similar to EFI Pace. When jobs are printed via IP address, the VUTEk printer software does not need to scan the complete RTL (which requires some time), but rather reads the .GIF preview that you can choose to generate in Fiery XF. This will accelerate the process noticeably.

For more information on how to set up a VUTEk printer in Fiery XF, see “Printing to a VUTEK printer” in the Fiery XF user manual. You can download the user manual from <http://help.efi.com/index/index.html>.