

How to use Fiery Central Scaling

The Fiery Central Scaling feature provides you with better control of scaling pages for Fiery and non-Fiery black-and-white printers. It allows you to make adjustments when the input PDF file page size is different from the output page size defined for the job.

The Fiery Central Scaling is supported through the Balance tab of Command WorkStation Job Properties and the Fiery Central printer driver.

You have the option of making no changes (None), Center on Larger Page Size or Scale to Page Size. Center on Larger Page Size takes the input PDF file and centers it on the page size defined for the job. Scale to Page Size takes the input PDF file and re-scales it to fit on the page size defined for the job.

Center on Larger Page Size

Keep the following in mind when you use the Center on Larger Page Size option:

- Centering is allowed only on the larger page size, such that the width and length of original page should be less than the requested page width and length.
- If either the width or length of the requested page size is smaller than the original page size, the job results in an error and does not print.
- If you have a multiple page size PDF file, all the original page sizes must have the width and length less than the requested page width and length, otherwise the job results in an error and does not print.
- PDF page boxes, such as Media box, Crop box, Bleed box, and Trim box, are resized to the required page size.

Scale to Page Size

Keep the following in mind when you use the Scale to Page Size option:

- You can use scale to fit for both small and large page sizes.
- Maintain the aspect ratio.

If the original page size is 3" x 6" and the requested page size is 4" x 12", then the page is scaled to 4" x 8" (aspect ratio in original page size is 2) and centered on 4" x 12" page size.

Another scenario, if the original page size is 4" x 12" and 2" x 3" page size is requested, then the page is scaled to 1" x 3" and centered on 2" x 3".

- Maintain page orientation.

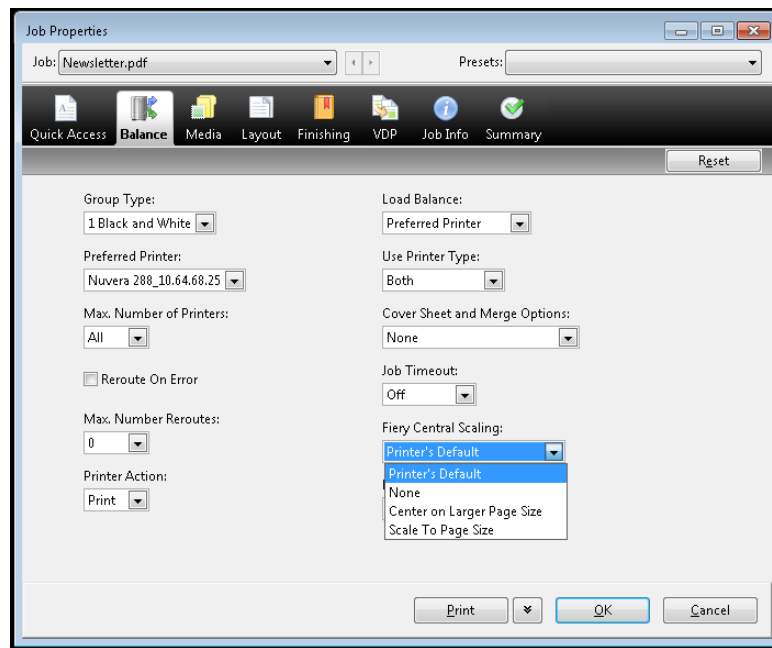
If the original PDF file has a page size of 4" x 8" and it is a mix of portrait and landscape pages meaning the first page is 4" x 8" and second page is 8" x 4" and the requested output is 2" x 4", then the first page is scaled to 2" x 4" and the second page is scaled to 4" x 2", not 2" x 4". See the attachment of mix portrait and landscape PDF.

- PDF page boxes, such as Media box, Crop box, Bleed box, and Trim box, are resized to the required page size.

Printing a job with the Fiery Central Scaling options

You can print a job with the Center on Larger Page Size or Scale to Page Size options from either Command WorkStation Job Properties or the Fiery Central printer driver.

NOTE: The Fiery Central Scaling feature is different than the Fiery Scale and Scale to fit print options. If you set the Fiery Central Scaling print option first and then set the Scale or Scale to fit print option in the Layout tab, you will get an unexpected result.



TO ACCESS FIERY CENTRAL SCALING OPTIONS FROM COMMAND WORKSTATION JOB PROPERTIES

- 1 Double-click your print job in the Held or Printed list, or right-click the job and select Properties.
- 2 Click the Balance icon in the Job Properties window.
- 3 From the Fiery Central Scaling menu, do one of the following:
 - Select Center on Larger Page Size
 - Select Scale to Page Size
- 4 Click Print.

TO ACCESS FIERY CENTRAL SCALING OPTIONS FROM THE FIERY CENTRAL PRINTER DRIVER

- 1 In your application, select File > Print.
- 2 Select the Fiery Central printer as your printer and click Properties.

- 3 In the printer driver, click the Balance icon.
- 4 From the Fiery Central Scaling menu, do one of the following:
 - Select Center on Larger Page Size
 - Select Scale to Page Size
- 5 Click Print.