

## BUG FIXES AND KNOWN ISSUES

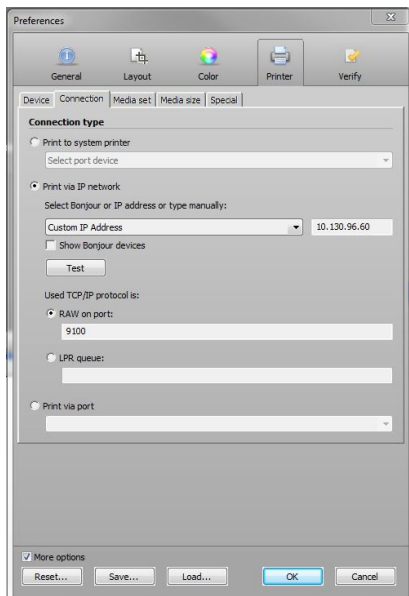
Below are bug fixes and known issues for Fiery® eXpress 4.6.1 that partners and users should be aware of.

### **Bug fixes:**

- Auto-cut function now working on EPSON SureColor SC-T7200 series
- Network connection problems with Canon imagePROGRAF PRO series resolved
- Canon imagePROGRAF PRO-1000 displayed errors when selecting custom paper size settings
- It was not possible to select an EPSON SureColor P series printer via USB connection
- Cloning issue with single-page and multi-page PDF collection fixed

### **Known Issues:**

- Selecting a printer via Bonjour on Windows causes a crash. The workaround is to disable Bonjour and set up a connection to the printer's IP address instead.



- Double-byte font names on Japanese Mac OS cause print failures. To avoid this, job file names are displayed instead of PDF job titles.
- It is not possible to use the embedded measuring device with the HP-Z printers on Mac OS.

For more information contact your local Fiery eXpress dealer or visit [www.efi.com/fieryexpress](http://www.efi.com/fieryexpress).

EFI's portfolio of integrated solutions increase productivity and improve your bottom line. Find out more at [www.efi.com](http://www.efi.com)