



Installation Guide

Fiery Command WorkStation 5.8 with Fiery Extended Applications 4.4

Fiery Extended Applications (FEA) v4.4 contains Fiery software for performing tasks using a Fiery Server. This document describes how to install Fiery Extended Applications v4.4 on your Fiery Server or client computer.

Fiery Software Manager is included with all installations of FEA. It guides you through first-time installation of Fiery applications and updates. For more information, see [Fiery Software Manager](#) on page 2.

System requirements for Fiery Extended Applications

You can install Fiery Command WorkStation with FEA on a stand-alone Fiery Server or supported Windows and Mac OS computers.

FEA 4.4 is supported for the following operating systems:

- Windows-based Fiery Server or Windows client computer: Windows Vista or later
- Mac OS client computer: Mac OS X v10.7 or later

Install on a Fiery Server or client computer

FEA is installed on the Fiery Server as part of the system software installation process from the User Software DVD. Do not uninstall Fiery Command WorkStation or FEA applications before you proceed. If you do, this installation fails. An earlier version of FEA must be installed before you can proceed.

During installation, the Fiery service exits before FEA is fully installed. The service restarts after FEA is installed and the Fiery Server is restarted.

Note: If you install FEA 4.4 on a Fiery Server, the installation package that already resides on the shared directory of the Fiery Server is replaced with Fiery Software Manager. Client computers can download Fiery Software Manager from the shared directory of the Fiery Server and use it to obtain FEA 4.4. The installation package available directly from the WebTools Download page is not updated.

To download FEA 4.4, and then install or update FEA on a Fiery Server, use the following instructions.

If an earlier version of Fiery Command WorkStation with FEA is already installed, you do not need to uninstall it before you proceed.

Note: If Fiery Command WorkStation with a version earlier than 5.5.0.35 is already installed on Windows 8 and you want to upgrade to Windows 8.1, install Fiery Extended Applications v4.4 first and then upgrade to Windows 8.1.



If Fiery Software Manager is running

These instructions require that Fiery Software Manager is running on the Fiery Server or client computer.

- 1 Check if Fiery Software Manager is running on the Fiery Server.
If the Fiery Software Manager is not running, see [If Fiery Software Manager is not running](#) on page 2.
- 2 Open Fiery Software Manager.
- 3 Locate the FEA 4.4 in the list and click Download.
If Fiery Software Manager requires an update to continue, it will automatically quit, update, and then restart.
- 4 Follow the on-screen instructions to install Fiery applications.

If Fiery Software Manager is not running

Use the following steps if Fiery Software Manager is not running on the server or client computer.

- 1 From the system, navigate to www.efi.com/cws5.
- 2 Click Free Download.
A form appears.
- 3 Enter your information in the form and click Submit.
Download buttons appear for Windows or Mac OS.
- 4 Click the Windows or Mac OS, then save the .exe or .dmg file to the computer.
- 5 Once the file is saved to the computer, open the saved file to start the Fiery Software Manager. If the End User License Agreement appears, follow the on-screen directions.
 - If Fiery applications are already installed, Fiery Software Manager displays the installed and available applications list.
 - If Fiery Software Manager requires an update to continue, it will automatically quit, update, and then restart.
- 6 In the Fiery Software Manager, click Download next to the Fiery Extended Applications to start the download.
For more information about Fiery Software Manager, see [Fiery Software Manager](#) on page 2.
- 7 Follow the on-screen instructions to install Fiery applications.

Fiery Software Manager

Fiery Software Manager is automatically included with all installations of Fiery Extended Applications. It guides you through first-time installations of Fiery applications and updates. Use the Fiery Software Manager to do the following:

- Install Fiery Extended Applications and Fiery JobFlow
- Manage first-time installations of Fiery applications
- Receive notifications about available updates to Fiery applications

By default, Fiery Software Manager is set to “Launch at Login” (see Preferences) in order to provide notifications about new updates.

- Manage updates to Fiery applications
- Install Fiery Language Package on a Fiery Server for additional language support
- (For service technicians) Update Fiery JDF on a Fiery Server

For information about using Fiery Integration Manager to update Fiery JDF, see the documentation at the following web address: help.efi.com/fip.

- Remove Fiery applications

Fiery Software Manager is available in English, French, Italian, German, Spanish, Brazilian Portuguese, Dutch, Japanese, Simplified Chinese, Traditional Chinese, Korean, Russian, Turkish, Polish, and Czech. If your computer's operating system is in another language, Fiery Software Manager displays in English.

Open Fiery Software Manager

- To open Fiery Software Manager, do one of the following:
 - On Windows: On the Task bar, click the Fiery Software Manager icon.
 - On Mac OS: On the Menu bar, double-click the Fiery Software Manager icon.

Install, update, or upgrade a Fiery application

- 1 Open Fiery Software Manager.
- 2 In Fiery Software Manager, click the Applications icon in the top left corner, then the Check for Updates icon in the top right corner.
- 3 Click Download next to the application name.
For applications in the Fiery Extended Applications, click Download next to Fiery Extended Applications.
The message appears, Fiery Software Manager requires an update to continue installation.
- 4 Click OK.
- 5 Click Install, Update, or Upgrade next to the application name and follow the on-screen instructions.

Remove a Fiery application

In Fiery Software Manager, click Remove next to the application name and follow the on-screen instructions.

Set a Fiery Software Manager preference

- 1 In Fiery Software Manager, click the Preferences icon in the bottom left corner.

2 As needed, select or clear the following settings:

- Launch at login (default)
- Show additional features
 - Install server updates for Fiery JDF (service technicians only)
 - Download server language packages for additional language support
- Help EFI improve its software - Allow EFI to collect anonymous usage data from Fiery applications.

Download Fiery Language Package

Fiery Language Package allows you to update the language support of a Fiery Server.

Fiery Command WorkStation supports the following languages: English, French, Italian, German, Spanish, Brazilian Portuguese, Dutch, Japanese, Simplified Chinese, Traditional Chinese, Korean, Russian, Turkish, Polish, and Czech.

If Fiery Command WorkStation is running in one of these languages and connects to a Fiery Server that does not support the same language, and you have downloaded a Fiery Language Package that includes support for that language, Fiery Command WorkStation may give you the option to install the language package to the Fiery Server. No additional action is required, aside from possibly rebooting the Fiery Server, to update it with the additional language.

Fiery Language Package is available for specific languages and specific models of Fiery Server. For more information about Fiery Language Package, see help.efi.com/flp.

- 1 In Fiery Software Manager, click the Preferences icon in the bottom left corner.
- 2 Select Show additional features.

Fiery Language Package appears only if the Show additional features preference is selected and if there is an updated Fiery Language Package that you have not yet downloaded.
- 3 Click the Applications icon in the top left corner, and click the Check for Updates icon in the top right corner.
- 4 Click Download next to Fiery Language Package.

Uninstall Fiery Software Manager from a Windows computer

To uninstall Fiery Software Manager from a Windows computer, you must uninstall all the applications installed or managed through Fiery Software Manager. Follow these steps to uninstall the applications supported by Fiery Software Manager and Fiery Extended Applications:

- 1 Navigate to the Windows Control Panel.
- 2 Select Uninstall a program.
- 3 Right-click Fiery User Software and select Uninstall.
- 4 Uninstall Fiery JobFlow using the Control Panel or Remove in Fiery Software Manager.
- 5 Uninstall Fiery Integration Manager using Remove in Fiery Software Manager.

When the last application is uninstalled, Fiery Software Manager is removed from the system.

Uninstall Fiery Software Manager from a Mac OS computer

To uninstall Fiery Software Manager from a Mac OS computer, you must uninstall all the applications installed or managed through the Fiery Software Manager. Follow these steps to uninstall the applications supported by Fiery Software Manager and Fiery Extended Applications:

- 1 In Applications, select Fiery Software Uninstaller.
The Fiery Software Uninstaller dialog box appears.
- 2 Select the Applications tab.
- 3 Click the box next to the software name.
- 4 Click Uninstall.

Connect a Fiery application to a Fiery Server

The first time you start a Fiery application, you are prompted to configure the connection to the Fiery Server. You can also edit the configuration whenever a change to your Fiery Server or network occurs, such as a changed server name or IP address.

- 1 Print the Fiery Server Configuration page.

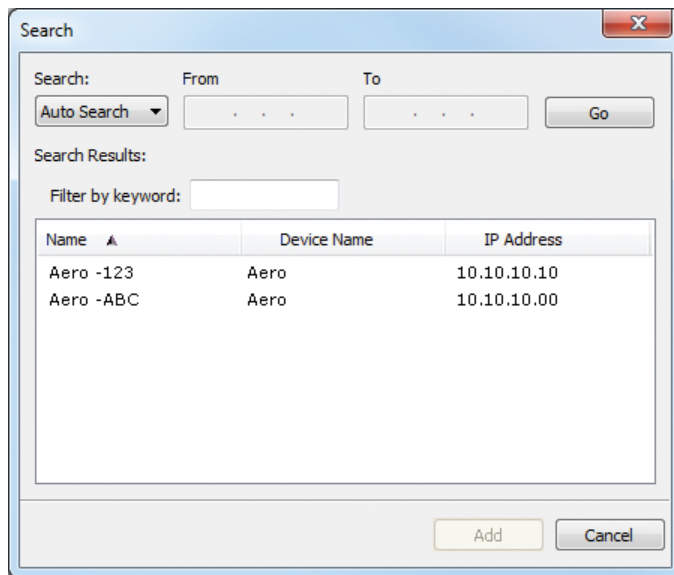
The Fiery Server Configuration page contains information that you need when configuring the connection, such as the IP address of the Fiery Server. Make sure that the Fiery Server is registered in a Domain Name Server (DNS) on your network. For more information, contact your network administrator.

a) In Fiery Command WorkStation, connect to the Fiery Server. Click Device Center.

b) Click Server Configuration.

Use the icons in the upper right to print or save the server configuration file to another location.

- 2 Start the application (for example, Fiery Command WorkStation or Fiery Remote Scan).
- 3 Click the plus "+" icon in the upper left corner.
The Connect to Server dialog box appears.
- 4 In the Connect to Server dialog box, do one of the following:
 - Enter the IP address or DNS name of a Fiery Server.
 - Use Search icon to search for, select, and add a Fiery Server. You can search by a range of IP addresses, by the IP address and subnet mask, or by Auto Search.



Note: If you have saved settings from a previous installation, the Search dialog box may display first.

5 Click Connect.

6 If prompted, log in.

If needed, see your administrator for the password. For information about setting passwords and the default Administrator password for the Fiery Server, see *Configuration and Setup*.

For information about managing and connecting more than one Fiery Server, see the online Help for the application.

Connect Fiery Hot Folders to a Fiery Server

1 Start Fiery Hot Folders.

2 In the Hot Folder Settings dialog box, enter a folder name (required) and a description (optional). If this dialog box does not display automatically, click New.

3 Click Browse to specify a location for the Fiery Hot Folders (for example, the desktop).

4 Click Select to connect to a Fiery Server.

The Connect to Server dialog box displays. This is a standard dialog box for Fiery applications and behaves the same way regardless of the application. For more information about how to use it, see [Connect a Fiery application to a Fiery Server](#) on page 5.

5 Click OK.

For more information about Fiery Hot Folders, see *Fiery Hot Folders Help*.