

# Installation Guide

## Command WorkStation 5.7

### with Fiery Extended Applications 4.3

Fiery Extended Applications Package (FEA) v4.3 contains Fiery applications for performing tasks associated with a Fiery Server. This document describes how to install Fiery Extended Applications Package (FEA) v4.3 on your client computer or the Fiery Server.

Fiery Software Manager is included with all installations of FEA. It guides you through first-time installations of Fiery applications and updates to Fiery applications. For more information, see [“Fiery Software Manager”](#) on page 3. With this version of Fiery Software Manager, you can install Fiery JobFlow as well as Fiery Extended Applications Package.

This version of Fiery Software Manager also allows you to update the language support and Fiery API on the Fiery Server and a service technician to update Fiery Server software for Fiery JDF.

## System requirements for Fiery Extended Applications

You can install Command WorkStation with Fiery Extended Applications on

- **A server-based Fiery Server, System 9 or later**

You cannot install FEA directly on an embedded Fiery Server since it is Linux based.

If you are unsure what system software is on a Fiery Server, see [“To determine the system software version on a Fiery Server”](#) on page 1.

- **Supported Windows and Mac OS user computers**

For more information, see *Configuration and Setup*.

**NOTE:** If you install Java 8 on Windows XP, a message appears that says not to use Java 8 on Windows XP. However, there are no known issues with running Fiery applications with Java 8 on Windows XP.

From user computers with this version of FEA, you can connect to a server-based Fiery Server, **System 8 Release 2 or later**.

---

### TO DETERMINE THE SYSTEM SOFTWARE VERSION ON A FIERY SERVER

Do one of the following:

- In Command WorkStation, connect to the Fiery Server. Click Device Center.
- Print the Configuration page for the Fiery Server. See Server Info > Software.



## Installation on a Fiery Server

**IMPORTANT**

FEA is installed on the Fiery Server as part of the system software installation process from the User Software DVD. Do not uninstall Command WorkStation or FEA applications before you proceed. If you do, this installation fails. An earlier version of FEA must be installed before you can proceed.

During installation, the Fiery service will exit before FEA is fully installed. The service will restart after FEA is installed and the Fiery Server is restarted.

**NOTE:** If you install FEA 4.3 on a Fiery Server, the installation package that already resides on the shared directory of the Fiery Server is replaced with Fiery Software Manager. Client computers can download Fiery Software Manager from the shared directory of the Fiery Server and use it to obtain FEA 4.3. The installation package available directly from the WebTools Download page is not updated.

### TO UPDATE COMMAND WORKSTATION WITH FEA ON A FIERY SERVER

- 1 **On the Fiery Server, go to [www.efi.com/cws5](http://www.efi.com/cws5). Click Download Now.**

Access the Fiery Server with the Fiery Advanced Controller Interface (FACI), monitor, or Remote Desktop, based on the configuration.

- 2 **Enter your information. Click Submit.**

- 3 **Click the download button, save the .exe file to the computer, and then double-click the file.**

Fiery Software Manager is installed and it opens. For more information about Fiery Software Manager, see “[Fiery Software Manager](#)” on page 3.

- 4 **In Fiery Software Manager, click Download next to Fiery Extended Applications Package.**

- 5 **Follow the on-screen instructions to install Fiery applications.**

If Fiery Software Manager needs an update to continue, click OK. Fiery Software Manager quits, updates, and then restarts automatically.

## Installation on Windows computers

If an earlier version of Command WorkStation with FEA is already installed, you do not need to uninstall it before you proceed.

**NOTE:** If Command WorkStation with a version earlier than 5.5.0.35 is already installed on Windows 8 and you want to upgrade to Windows 8.1, install Fiery Extended Applications Package v4.3 first and then upgrade to Windows 8.1.

### TO INSTALL COMMAND WORKSTATION WITH FEA ON WINDOWS COMPUTERS

- 1 **On a Windows computer, go to [www.efi.com/cws5](http://www.efi.com/cws5). Click Download Now.**

- 2 **Enter your information. Click Submit.**

- 3 **Click the appropriate download button for Windows, save the .exe file to the computer, and then double-click the file.**

Fiery Software Manager is installed and it opens. For more information about Fiery Software Manager, see “[Fiery Software Manager](#)” on page 3.

- 4 **In Fiery Software Manager, click Download next to Fiery Extended Applications Package.**
- 5 **Follow the on-screen instructions to install Fiery applications.**

If Fiery Software Manager needs an update to continue, click OK. Fiery Software Manager quits, updates, and then restarts automatically.

## Installation on Mac OS computers

**IMPORTANT**

If an earlier version of Command WorkStation with FEA is already installed, you do not need to uninstall it before you proceed.

---

### To INSTALL COMMAND WORKSTATION WITH FEA ON MAC OS COMPUTERS

- 1 **On a Mac OS computer, go to [www.efi.com/cws5](http://www.efi.com/cws5). Click Download Now.**
- 2 **Enter your information. Click Submit.**
- 3 **Click the appropriate download button for Mac OS, save the .dmg file to the computer, and double-click the file.**

Fiery Software Manager is installed and it opens. For more information about Fiery Software Manager, see “[Fiery Software Manager](#)” on page 3.

- 4 **In Fiery Software Manager, click Download next to Fiery Extended Applications Package.**
- 5 **Follow the on-screen instructions to install Fiery applications.**

If Fiery Software Manager needs an update to continue, click OK. Fiery Software Manager quits, updates, and then restarts automatically.

## Fiery Software Manager

Fiery Software Manager is automatically included with all installations of Fiery Extended Applications. It guides you through first-time installations of Fiery applications and updates to Fiery applications.

Use the Fiery Software Manager to do the following:

- Install Fiery Extended Applications Package and Fiery JobFlow
- Manage first-time installations of Fiery applications
- Receive notifications about available updates to Fiery applications

By default, Fiery Software Manager is set to “Launch at Login” (see Preferences) in order to provide notifications about new updates.

- Manage updates to Fiery applications (manually or automatically)

Fiery Software Manager checks for updates and downloads them automatically when “Download updates automatically” is selected (see Preferences).

- Remove Fiery applications
- Install Fiery Language Package on a Fiery Server for additional language support.
- Install Fiery Integration Manager to update Fiery API on a Fiery Server to support Fiery Go and third-party applications.
- (For service technicians) Install Fiery Integration Manager to update Fiery JDF on a Fiery Server.

For information about using Fiery Integration Manager to update Fiery JDF, see the documentation at [help.efi.com/fip](http://help.efi.com/fip).

Fiery Software Manager is available in English, French, Italian, German, Spanish, Brazilian Portuguese, Dutch, Japanese, Simplified Chinese, Traditional Chinese, Korean, Russian, Turkish, Polish, and Czech. If your computer’s operating system is in another language, Fiery Software Manager displays in English.

#### **TO OPEN FIERY SOFTWARE MANAGER**

**1 Do one of the following:**

- On Windows: On the taskbar, click the Fiery Software Manager icon.
- On Mac OS: On the Menu bar, double-click the Fiery Software Manager icon.

**2 If needed, accept the license agreement.**

#### **TO INSTALL, UPDATE, OR UPGRADE AN APPLICATION**

**1 In Fiery Software Manager, click the Check for Updates icon in the top right corner.**

**2 If the update is not downloaded automatically, click Download next to the application name.**

For applications in Fiery Extended Applications Package, click Download next to Fiery Extended Applications Package.

**3 Click Install, Update, or Upgrade next to the application name and follow the on-screen instructions.**

#### **TO REMOVE AN FEA APPLICATION**

**1 In Fiery Software Manager, click Remove next to the application name and follow the on-screen instructions.**

#### **TO SET FIERY SOFTWARE MANAGER PREFERENCES**

**1 In Fiery Software Manager, click the Preferences icon in the bottom left corner.**

**2 As needed, select or clear the following settings:**

- Launch at login (selected by default)

- Download updates automatically (selected by default)
- Show additional features - Select this preference to install server updates for Fiery JDF (service technicians only) and Fiery API or download server language packages for additional language support.
- Help EFI improve its software - Select this preference to allow EFI to collect anonymous usage data from Fiery applications.

## Downloading Fiery Language Package

Fiery Language Package allows you to update the language support of a Fiery Server. Command WorkStation supports the following languages: English, French, Italian, German, Spanish, Brazilian Portuguese, Dutch, Japanese, Simplified Chinese, Traditional Chinese, Korean, Russian, Turkish, Polish, and Czech. If Command WorkStation is running in one of these languages and connects to a Fiery Server that does not support the same language, and you have downloaded a Fiery Language Package that includes support for that language, Command WorkStation may give you the option to install the language package to the Fiery Server. No additional action is required, aside from possibly rebooting the Fiery Server, to update it with the additional language.

Fiery Language Package is available for specific languages and specific models of Fiery Server. For more information about Fiery Language Package, see [help.efi.com/flp](http://help.efi.com/flp).

---

### TO DOWNLOAD A FIERY LANGUAGE PACKAGE

- 1 In Fiery Software Manager, click the Preferences icon in the bottom left corner.
- 2 Select “Show additional features”.
- 3 Click the Applications icon in the top left corner, and click the Check for Updates icon in the top right corner.
- 4 Click Download next to Fiery Language Package.

Fiery Language Package appears only if the “Show additional features” preference is selected and if there is an updated language package that you have not yet downloaded.

## Fiery API

FEA 4.3 can add support for Fiery API v1.3 to any Fiery Server with System 9 Release 2 or later (including System 10, FS100 Pro, FS150 Pro) software. The Fiery Server may be embedded or standalone. With Fiery API v1.3, the Fiery Server can support the mobile application Fiery Go and third-party applications that are based on Fiery API.

For more information about Fiery Go, see [w3.efi.com/Fiery/Products/CWS5/Fiery-Go](http://w3.efi.com/Fiery/Products/CWS5/Fiery-Go). For more information about developing a third-party application using Fiery API, see [developer.efi.com/fiery](http://developer.efi.com/fiery).

You use Fiery Integration Manager to add Fiery API to a Fiery Server.

---

**TO ADD FIERY API V1.3 TO A FIERY SERVER**

- 1 On a Windows computer, open Fiery Software Manager.
- 2 Click the Preferences icon in the bottom left corner.
- 3 Select “Show additional features”.
- 4 Click the Applications icon in the top left corner, and click the Check for Updates icon in the top right corner.
- 5 Click Download next to Fiery Integration Package.
- 6 Open Fiery Integration Manager.  
  
**NOTE:** Fiery Integration Manager supports English only.
- 7 Connect to the Fiery Server, and click the button to upgrade the Fiery API service on the Fiery Server.

**Uninstall Fiery Software Manager**

On Windows, to uninstall Fiery Software Manager, you must uninstall the entire Fiery Extended Applications Package. Use the Fiery Software Uninstaller from Control Panel.

**Connecting a Fiery application to a Fiery Server**

The first time you start a Fiery application, you are prompted to configure the connection to the Fiery Server. You can also edit the configuration whenever a change to your Fiery Server or network occurs, such as a changed server name or IP address.

---

**BEFORE YOU BEGIN**

- **Print the Fiery Server Configuration page.**


For instructions on printing the Configuration page, see *Configuration and Setup*, which is part of the user documentation set.

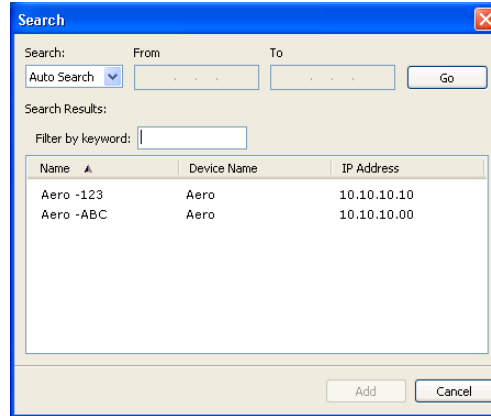
The Fiery Server Configuration page contains information that you need when configuring the connection, such as the IP address of the Fiery Server. Make sure that the Fiery Server is registered in a Domain Name Server (DNS) on your network. For more information, contact your network administrator.

---

**TO CONNECT A FIERY APPLICATION TO A FIERY SERVER**

- 1 **Start the application (for example, Command WorkStation or Fiery Remote Scan).**
- 2 **In the Connect to Server dialog box, do one of the following:**
  - Enter the IP address or DNS name of a Fiery Server.

- Use Search  to search for, select, and add a Fiery Server. You can search by a range of IP addresses, by the IP address and subnet mask, or by Auto Search.



**NOTE:** If you have saved settings from a previous installation, the Search dialog box may display first.

- 3 **Click Connect.**
- 4 **If prompted, log in.**

If needed, see your administrator for the password. For information about setting passwords and the default Administrator password for the Fiery Server, see *Configuration and Setup*.



For information about managing and connecting more than one Fiery Server, see Help for the application.

---

## TO CONNECT FIERY HOT FOLDERS TO A FIERY SERVER

- 1 **Start Fiery Hot Folders.**
- 2 **In the Hot Folder Settings dialog box, enter a folder name (required) and a description (optional).**

If this dialog box does not display automatically, click New.

- 3 **Click Browse to specify a location for the Hot Folder (for example, the desktop).**
- 4 **Click Select to connect to a Fiery Server.**

The Connect to Server dialog box displays. This is a standard dialog box for Fiery applications and behaves the same way regardless of the application. For more information about how to use it, see [“To connect a Fiery Application to a Fiery Server”](#) on page 6.



- 5 **Click OK.**

For more information about Fiery Hot Folders, see Fiery Hot Folders Help.