

Installation Guide

Command WorkStation 5.5

with Fiery Extended Applications 4.1

About Fiery Extended Applications

Fiery Extended Applications (FEA) 4.1 is a package of the following applications for use with Fiery print controllers:

- Command WorkStation 5.5
- Fiery Hot Folders
- Fiery Remote Scan
- Fiery Software Manager

Fiery Software Manager is automatically included with all installations of Fiery Extended Applications (FEA). It guides you through first-time installations of Fiery applications and updates to Fiery applications. For more information, see “[Fiery Software Manager](#)” on page 4.

What’s New in Command WorkStation

For more information about new and updated features in Command WorkStation, see <http://w3.efi.com/Fiery/Products/CWS5>.

What happened to Fiery Bridge?

Fiery Bridge is a Windows-only application that is no longer part of the Fiery Extended Applications (FEA) package. It has been replaced by the folder mapping feature in Fiery Remote Scan. Existing installations of Fiery Bridge are uninstalled automatically.

If you have Fiery Bridge and it is configured for least one Fiery print controller, Fiery Bridge settings are saved for later use in Fiery Remote Scan (for example, connections to Fiery print controller and saved user names). Once installation is complete, Fiery Remote Scan automatically uses these saved settings.



For more information about folder mapping, see Fiery Remote Scan Help.



Installing Command WorkStation with Fiery Extended Applications

You can install Command WorkStation with Fiery Extended Applications (FEA) on:

- **Server-based Fiery print controllers, System 9 or later**

You cannot install FEA directly on embedded Fiery print controllers since they are Linux based.

If you are unsure what system software is on a Fiery print controller, see [“To determine the system software version on Fiery print controllers”](#) on page 2.

- **Supported Windows and Mac OS user computers**

For more information, see *Configuration and Setup*.

From user computers with this version of FEA, you can connect to server-based Fiery print controllers, **System 8 Release 2 or later**.

TO DETERMINE THE SYSTEM SOFTWARE VERSION ON FIERY PRINT CONTROLLERS

Do one of the following:

- In Command WorkStation, connect to the Fiery print controller. Click Device Center.
- Print the Configuration page for the Fiery print controller. See Server Info > Software.

TO UPDATE COMMAND WORKSTATION WITH FEA ON FIERY PRINT CONTROLLERS

IMPORTANT

FEA is installed on the Fiery print controller as part of the system software installation process from the User Software DVD. Do NOT uninstall Command WorkStation or FEA applications before you proceed. If you do, this installation fails. An earlier version of FEA must be installed before you can proceed.

As part of this installation, Fiery Bridge is automatically uninstalled, if detected. For more information, see [“What happened to Fiery Bridge?”](#) on page 1.

- 1 On the Fiery print controller, go to www.efi.com/cws5. Click Download Now.**

Access the Fiery print controller with the Fiery Advanced Controller Interface (FACI), monitor, or Remote Desktop, based on the configuration.

- 2 Enter your information. Click Submit.**

- 3 Click the download button, save the .exe file to the computer, and then double-click the file.**

Fiery Software Manager installs and opens. For more information about Fiery Software Manager, see [“Fiery Software Manager”](#) on page 4.

- 4 In Fiery Software Manager, click Download. Follow the on-screen instructions to install Fiery applications.**

IMPORTANT

TO INSTALL COMMAND WORKSTATION WITH FEA ON WINDOWS COMPUTERS

If an earlier version of Command WorkStation with FEA is already installed, you do not need to uninstall it before you proceed.

As part of this installation, Fiery Bridge is automatically uninstalled, if detected. For more information, see “[What happened to Fiery Bridge?](#)” on page 1.

- 1 On a Windows computer, go to www.efi.com/cws5. Click Download Now.**
- 2 Enter your information. Click Submit.**
- 3 Click the appropriate download button for Windows, save the .exe file to the computer, and then double-click the file.**

Fiery Software Manager installs and opens. For more information about Fiery Software Manager, see “[Fiery Software Manager](#)” on page 4.

- 4 In Fiery Software Manager, click Download. Follow the on-screen instructions to install Fiery applications.**

TO INSTALL COMMAND WORKSTATION WITH FEA ON MAC OS COMPUTERS

- 1 On a Mac OS computer, go to www.efi.com/cws5. Click Download Now.**
- 2 Enter your information. Click Submit.**
- 3 Click the appropriate download button for Mac OS, save the .dmg file to the computer, and double-click the file.**

Fiery Software Manager installs and opens. For more information about Fiery Software Manager, see “[Fiery Software Manager](#)” on page 4.

- 4 In Fiery Software Manager, click Download. Follow the on-screen instructions to install Fiery applications.**

Fiery Software Manager

Fiery Software Manager is automatically included with all installations of Fiery Extended Applications (FEA). It guides you through first-time installations of Fiery applications and updates to Fiery applications.

Use the Fiery Software Manager to do the following:

- Manage first-time installations of Fiery applications
- Receive notifications about available updates to Fiery applications

By default, Fiery Software Manager is set to “Start at Login” (see Preferences) in order to provide notifications about new updates.

- Manage updates to Fiery applications (manually or automatically)

Fiery Software Manager checks for updates and downloads them automatically when “Download updates automatically” is selected (see Preferences).

- Remove Fiery applications

For more information about preferences, see [“To set Fiery Software Manager preferences” on page 5](#).

Supported languages

Fiery Software Manager is available in English, French, Italian, German, Spanish, Brazilian Portuguese, Dutch, Japanese, Simplified Chinese. If your computer’s operating system is in another language, Fiery Software Manager displays in English.

Uninstall Fiery Software Manager

On Windows, to uninstall Fiery Software Manager, you must uninstall the entire Fiery Extended Applications (FEA) 4.1 package. Use the Fiery Software Uninstaller from Control Panel.

TO OPEN FIERY SOFTWARE MANAGER

1 Do one of the following:

- On Windows: On the taskbar, double-click the Fiery Software Manager icon.
- On Mac OS: On the Menu bar, double-click the Fiery Software Manager icon.

2 If needed, accept the license agreement.

TO REMOVE APPLICATIONS OR INSTALL UPDATES

- 1 If needed, accept the license agreement.**
- 2 Open Fiery Software Manager. Click Manage.**

The Fiery Software Uninstaller displays.

- 3 In the Fiery Software Installer, do one or more of the following:**
 - **Remove applications:** To remove an application, clear its check box.
 - **Install applications:** To install an application, select its check box.
- 4 Follow the on-screen instructions.**

Only the selected applications in [step 4](#) are installed at the end of this process.

TO CHECK FOR UPDATES

- 1 If needed, accept the license agreement.**
- 2 Open Fiery Software Manager. Click Check for Updates.**

Information about available updates displays.

To expand/collapse a list of what is included in a package, click the arrow next to the package.

- 3 Follow the on-screen instructions.**

TO SET FIERY SOFTWARE MANAGER PREFERENCES

- 1 If needed, accept the license agreement.**
- 2 Right-click the Fiery Software Manager icon. In the shortcut menu, click Preferences.**
- 3 As needed, select or clear the following settings:**
 - Start at login (default)
 - Download updates automatically

Connecting Fiery applications to Fiery print controllers

The first time you start a Fiery application, you are prompted to configure the connection to the Fiery print controller. You can also edit the configuration whenever a change to your Fiery print controller or network occurs, such as a changed server name or IP address.


BEFORE YOU BEGIN

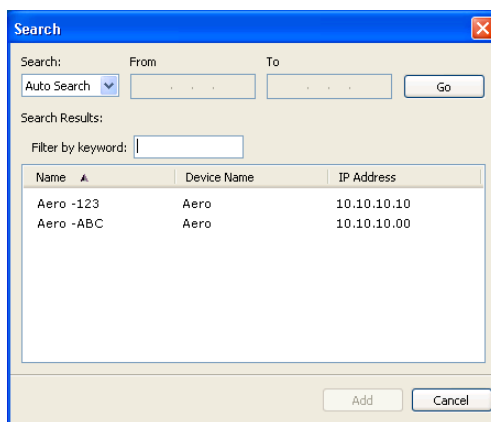
- **Print the Fiery print controller Configuration page.**

For instructions on printing the Configuration page, see *Configuration and Setup*, which is part of the user documentation set.

The Fiery print controller Configuration page contains information that you need when configuring the connection, such as the IP address of the Fiery print controller. Make sure that the Fiery print controller is registered in a Domain Name Server (DNS) on your network. For more information, contact your network administrator.

TO CONNECT FIERY APPLICATIONS TO FIERY PRINT CONTROLLERS

- 1 **Start the application (for example, Command WorkStation or Fiery Remote Scan).**
- 2 **In the Connect to Server dialog box, do one of the following:**
 - Enter the IP address or DNS name of a Fiery print controller.
 - Use Search  to search for, select, and add a Fiery print controller. You can search by a range of IP addresses, by the IP address and subnet mask, or by Auto Search.



NOTE: If you have saved settings from a previous installation, the Search dialog box may display first.

- 3 **Click Connect.**
- 4 **If prompted, log in.**

If needed, see your administrator for the password. For information about setting passwords and the default Administrator password for the Fiery print controller, see *Configuration and Setup*.



For information about managing and connecting additional Fiery print controllers, see Help for the application.

TO CONNECT FIERY HOT FOLDERS TO FIERY PRINT CONTROLLERS

- 1 **Start Fiery Hot Folders.**
- 2 **In the Hot Folder Settings dialog box, enter a folder name (required) and a description (optional).**

If this dialog box does not display automatically, click New.

- 3 **Click Browse to specify a location for the Hot Folder (for example, the desktop).**
- 4 **Click Select to connect to a Fiery print controller.**

The Connect to Server dialog box displays. This is a standard dialog box for Fiery applications and behaves the same way regardless of the application. For more information about how to use it, see [“To connect Fiery Applications to Fiery print controllers” on page 6.](#)

- 5 **Click OK.**



For more information about Fiery Hot Folders, see Fiery Hot Folders Help.